

# Instruction Manual

Refrigerator - Freezer

SIDE BY SIDE



# SUMMARY

<b>SAFETY INFORMATION</b> .....	2
<b>PREPARATION BEFORE USE</b> .....	6
Installation .....	6
Moving the appliance .....	6
Placement .....	6
Space requirements .....	7
Energy saving tips .....	7
<b>PRODUCT OVERVIEW</b> .....	8
<b>CONTROL PANEL</b> .....	9
<b>USE</b> .....	10
First use .....	10
Lock/ Unlock Panel .....	10
Adjust the temperature in the fridge .....	10
Adjust the temperature for freezer .....	11
Auto Control mode .....	11
Holiday mode .....	11
Super Cool mode .....	12
Fast Freeze Mode .....	12
Tips on storing fresh food .....	12
Water dispenser .....	13
Open door alarm .....	14
Energy-saving of control panel .....	14
Power failure .....	14
Non- use for long periods .....	14
<b>CARE AND CLEANING</b> .....	15
Defrosting .....	15
Cleaning .....	15
Cleaning the water tank .....	15
<b>ACCESSORIES</b> .....	16
Adjustable shelves .....	16
Removable door racks/bottle holder .....	16
Removable drawer .....	16
Water dispenser .....	16
Replacing the LED-lamps .....	17
Remove and install the doors .....	17
Availability of spare parts .....	17
<b>TROUBLESHOOTING</b> .....	18
Technical assistance .....	19
<b>SCRAPPING OLD APPLIANCES</b> .....	20
Conformity .....	20
Guarantee .....	20



**EN- WARNING: Risk of fire/flammable material.** The symbol indicates there is a risk of fire since flammable materials used. Taking care to avoid causing a fire by igniting flammable material.

Thank you for purchasing this product.

Before using your refrigerator, please carefully read this instruction manual in order to maximize its performance. Store all documentation for subsequent use or for other owners. This product is intended solely for household use or similar applications such as:

- the kitchen area for personnel in shops, offices and other working environments
- on farms, by clientele of hotels, motels and other environments of a residential type
- at bed and breakfasts (B & B)
- for catering services and similar applications not for retail sale.

This appliance must be used only for purposes of storage of food, any other use is considered dangerous and the manufacturer will not be responsible for any omissions. Also, it is recommended that you take note of the warranty conditions.

## **SAFETY INFORMATION**

Please read the operating and installation instructions carefully!

They contain important information on how to install, use and maintain the appliance.

The manufacturer is not liable if you fail to comply with the instructions and warnings.

Retain all documents for subsequent use or for the next owner.

- Do not connect the appliance to the electricity supply until all packing and transit protectors have been removed. Keep children away from packaging and its parts.  
Danger of suffocation from folding cartons and plastic film!
- Leave to stand for at least 4 hours before switching on the product, to allow compressor oil to settle if transported horizontally.
- Make sure there is no transport damage.
- Do not damage the refrigerant circuit.
- Maintain the ventilation openings in the appliance enclosure or in the built-in structure, free of obstruction.
- Never use water to wash the compressor position, wipe it with a dry cloth thoroughly after cleaning to prevent rust.
- Handle the appliance always with at least two persons because it is heavy.
- Install and level the appliance in an area suitable for its size and use.
- Make sure that the electrical information on the rating plate agrees with the power supply. If it does not, contact an electrician.
- The appliance is operated by a 220-240 VAC/50 Hz power supply. Abnormal voltage fluctuation may cause the appliance to fail to start, or damage to the temperature control or compressor, or there may be an abnormal noise when operating. In such case, an automatic regulator shall be mounted.
- Only for UK: The appliance's power cable is fitted with 3-cord (grounding) plug that fits a standard 3-cord (grounded) socket. Never cut off or dismount the third pin (grounding). After the appliance is installed, the plug should be accessible.

- Make sure that mains cable is not caught under the appliance during and after carrying/moving the appliance, to avoid the mains cable becoming cut or damaged. If the supply cord is damaged, it must be replaced by the manufacturer, its service agent or similarly qualified person in order to avoid a hazard.
- Do not install the appliance in humid, oily or dusty places, nor expose it to direct sunlight and to water.
- Do not install the appliance near heaters or inflammable materials.
- FOR appliances with a freezer compartment: if there is a power failure do not open the lid. Frozen food should not be affected if the failure lasts for less than the hours indicated on the rating label (Temperature rise time). If the failure is longer, then the food should be checked and eaten immediately or cooked and then refrozen.
- If you find that the lid of the appliance is difficult to open just after you have closed it, don't worry. This is due to the pressure difference which will equalize and allow the lid to be opened normally after a few minutes.
- Do not store medicines, bacteria or chemical agents in the appliance. This appliance is a household appliance, it is not recommended to store materials that require strict temperatures.
- Do not excessively pull or fold the power cord or touch the plug with wet hands.
- Do not store products which contain flammable propellant (e.g. spray cans) or explosive substances in the appliance. Risk of explosion!
- Do not place unstable articles (heavy objects, containers filled with water) on top of the refrigerator, to avoid personal injury caused by falling or electric shock caused by contact with water.
- Do not use electrical appliances inside the food storage compartments, unless they are of the type recommended by the manufacturer.
- Do not touch internal cooling elements, especially with wet hands, to avoid cracks or injuries.
- At risk here are children, people who have limited physical, mental or sensory abilities, as well as people who have inadequate knowledge concerning safe operation of the appliance.
- Check that children and vulnerable people have understood the hazards. A person responsible for safety must supervise or instruct children and vulnerable people who are using the appliance. Only children aged 8 years and above may use the appliance.
- Children should not play with the appliance.
- Children aged from 3 to 8 years are allowed to load and unload this appliance.

- FOR appliances with a freezer compartment: do not store bottled or canned liquids (especially carbonated drinks) in the freezer compartment. Bottles and cans may burst!
- FOR appliances with a freezer compartment: never put frozen food straight from the freezer compartment in your mouth. Risk of low-temperature burns!
- Keep plastic parts and the door seal free of oil and grease. Otherwise, plastic parts and the door seal will become porous.
- Before performing any operation, unplug the power cord from the power socket.
- Do not use mechanical devices or other means to accelerate the defrosting process, other than those recommended by the manufacturer.
- Do not use pointed or sharp-edged objects such as knives or forks to remove the frost.
- Never use hairdryers, electrical heaters or other such electrical appliances for defrosting.
- It is recommended to keep the plug clean, any excessive dust residues on the plug can be the cause fire.
- Do not try to repair, disassemble or modify the appliance by yourself. In case of repair please contact always our customer service.
- Supervise children while the appliance is being cleaned or maintained.
- Do not clean the cold glass shelves with hot water. Sudden temperature change may cause the glass to break.
- WARNING: The tubes of the refrigeration circuit convey a small quantity of an environmentally friendly but flammable refrigerant (R600a) and insulating gas (cyclopentane). It does not damage the ozone layer and does not increase the greenhouse effect. If refrigerant escapes, it may injure your eyes or ignite.
- If the refrigerant circuit should be damaged:
  - Switch off the appliance and pull out the mains plug,
  - Keep naked flames and/or ignition sources away from the appliance,
  - Thoroughly ventilate the room for several minutes,
  - Inform customer service.
- WARNING: Do not damage the plug and/or the power cord; this could cause electrical shocks or fires.
- WARNING: Do not use multiple portable socket-outlets or portable power supplies. We do not recommend the use of extension leads and multi-way adapters.
- Ice-makers is not intended to be connected to the water supply.

WARNING: Fill it with potable water only

- Do not attempt to sit or stand on the top of the appliance. You could injure yourself or damage it. This appliance is not designed for stacking with any other ones.
- The product is designed and built for domestic household use only.
- Only original parts supplied by the manufacturer may be used. The manufacturer guarantees that only these parts satisfy the safety requirements.
- WARNING! The appliance contains the flammable refrigerant ISOBUTANE (R600a). Make sure the refrigerant circuit is not damaged during transportation or installation. Leaking refrigerant may cause eye injuries or ignite. If a damage has occurred, keep away open fire sources, thoroughly ventilate the room, do not plug or unplug the power cords of the appliance or any other appliance. Inform the customer service.

In case of eyes getting into contact with the refrigerant, rinse immediately under running water and call the eye specialist.

WARNING! The refrigerant system is under high pressure. Do not tamper with it. Since the flammable refrigerants are used, please, install, handle and service the appliance strictly according to the instructions and contact the professional agent or our after-sales service to dispose of the appliance

- Opening the door for long periods can cause a significant increase of the temperature in the compartments of the appliance.
  - Clean regularly surfaces that can come in contact with food and accessible drainage systems.
  - Clean water tanks if they have not been used for 48h; flush the water system connected to a water supply if water has not been drawn for 5 days.
  - Store raw meat and fish in suitable containers in the refrigerator, so that it is not in contact with or drip onto other food.
  - Two-star frozen-food compartments (if they are presented in the appliance) are suitable for storing pre-frozen food, storing or making ice-cream and making ice cubes.
  - One-, two- and three -star compartments, if present in the appliance, are not suitable for the freezing of fresh food.
  - If the appliance is left empty for long periods, switch off, defrost, clean, dry and leave the door open to prevent mould developing within the appliance.
- FOR a free standing appliance: this refrigerating appliance is not intended to be used as a built-in appliance
- FOR appliances without a 4-star compartment: this refrigerating appliance is not suitable for freezing foodstuffs

## PREPARATION BEFORE USE

### Installation

1. Remove all packing materials, including the transparent protective film
2. Clean the refrigerator before use
3. Let the refrigerator stand still for at least 2 hours before connecting it to the power supply
4. Before each connection check if:
  - Power supply, socket and fusing are appropriate (see Rating plate)
  - The power socket is earthed and there is no multi-plug or extension
  - The power plug and socket are strictly according.

Notice: Please take off the protector on the pins of the plug. It takes 2 -3 hours before the refrigerator can be normally used. Don't put foods into the refrigerator right after the refrigerator is energized.

### Moving the appliance

1. Remove all food and unplug the appliance
2. Secure shelves and other moveable parts in the fridge and freezer with adhesive tape
3. Do not tilt the appliance more than 45° to avoid damaging the refrigerating system
4. Do not lift the appliance by its handles
5. Never place the appliance horizontally on the ground

### Placement

- The refrigerator should be placed on solid ground.
- To avoid leaning forward, the adjustable black foot in the front of the refrigerator can be adjusted. Turn clockwise to raise up the Refrigerator. Never use foamed plastic as space or pad to lift up the refrigerator
- To keep the refrigerator ventilated, there should be at least 10 cm against the wall for each side.
- Never place the Refrigerator in a damp place or with water splashes. Any water drops or other contaminations shall be wiped out by a soft cloth to prevent rusting or any impairment to the electrical insulation.
- Do not use the appliance under 5 degrees, do not use it outside or in the rain.

This appliance is intended to be use in a room with an ambient temperature between 16°C and 43°C, since it can influence the temperature inside the appliance and its energy consumption.

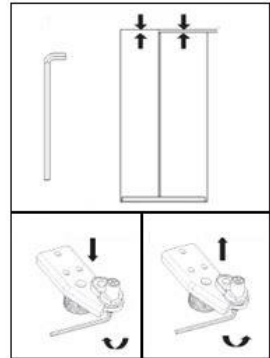
Install the appliance at a location where the ambient temperature corresponds to the climate class indicated on the rating plate of the appliance:

- - Extended temperate (SN): 'this refrigerating appliance is intended to be used at ambient temperatures ranging from 10 °C to 32 °C'
- - Temperate (N): 'this refrigerating appliance is intended to be used at ambient temperatures ranging from 16 °C to 32 °C'
- - Subtropical (ST): 'this refrigerating appliance is intended to be used at ambient temperatures ranging from 16 °C to 38 °C'
- - Tropical (T): 'this refrigerating appliance is intended to be used at ambient temperatures ranging from 16 °C to 43 °C'

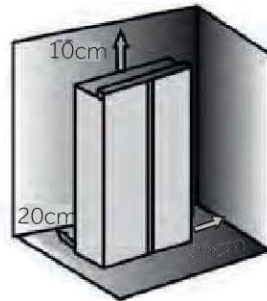
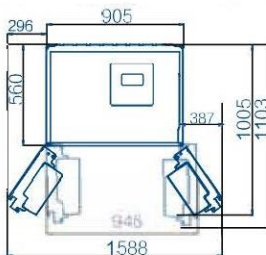
### Fine tuning of the doors

If the doors are still not at level after leveling the doors by the feet, this mismatch can be remedied by turning the hinge lifting shaft at the right bottom, corner of the refrigerator door with a spanner

- Turn the lifting shaft clockwise with a spanner to lower the door height
- Turn the lifting shaft anti clock with a spanner to lift the door height



### Space requirements

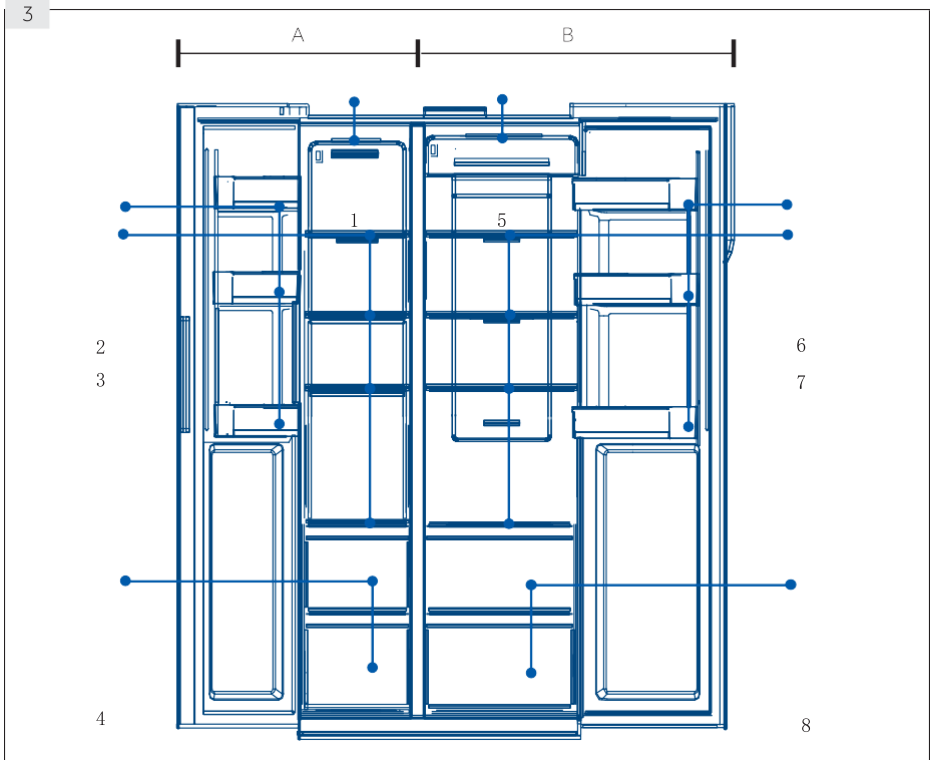


### Energy saving tips

- The appliance should be located in the coolest area of the room, away from heat producing appliances or heating ducts, and out of the direct sunlight.
- Let hot foods cool to room temperature before placing it in the appliance.
- Avoid unnecessary low temperature in the appliance, as the energy consumption would increase
- Functions like Super Cool or Fast Freeze consume more energy
- Be sure to wrap foods properly, and wipe containers dry before placing them in the appliance. This cuts down on frost build-up inside the appliance. Appliance storage bin should not be lined with aluminum foil, wax paper or paper toweling. Do not overfill the appliance
- Liners interfere with cold air circulation, making the appliance less efficient.
- Open the appliance's door as little and as briefly as possible, while keeping door seals clean so that the door always closes correctly
- The most energy-saving configuration requires drawer, food box and shelves to be positioned in the appliance on factory-fresh condition, and food to be placed without blocking the air outlet of the duct



## PRODUCT OVERVIEW

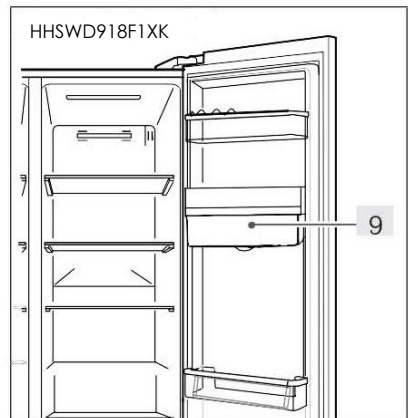


### A: Freezer compartment

1. Ceiling lamp
2. Door rack/ bottle holder
3. Freezer Shelves
4. Freezer Box

### B: Fridge compartment

5. Ceiling lamp
6. Door rack/ bottle holder
7. Fridge Shelves
8. Fridge Box
9. Water tank



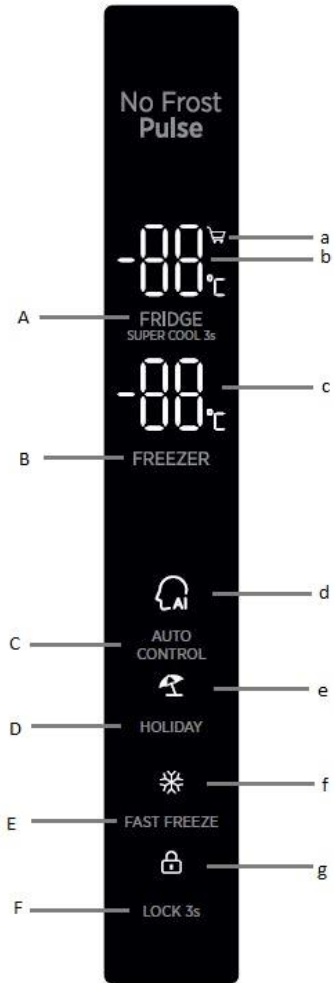
## CONTROL PANEL

### Keys:

- A. Fridge selector
- B. Freezer selector
- C. Auto control mode
- D. Holiday mode
- E. Fast -Freeze mode
- F. Panel lock selector

### Indicators:

- a. Super Cool mode
- b. Fridge Temperature
- c. Freezer Temperature
- d. Auto control Mode
- e. Holiday mode
- f. Fast Freeze mode
- g. Panel lock



## USE

### First use

When the refrigerator first connects with power, the display is on. The default temperature for fridge compartment is 4°C, and freezer is -18°C .The intelligence function light is on. Under normal ambient conditions, you do not need to set a temperature

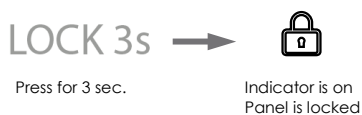
### Lock/ Unlock Panel

- Automatic Lock:

When the fridge door and the freezer door are closed, and there is no operation on any button for 30s, the panel light will automatically turn off, and the panel is locked.

- Manual Lock:

When the panel is unlocked, press the Lock button for 3 seconds , and the buzzer make a buzzing sound, the lock indicator is on, and then the display is locked.



- Unlock:

When the panel is off, open any door of the refrigerator or touch any button on the control panel, the panel will light up. At this time, the panel is locked. Press the lock function button for 3 seconds, the buzzer will sound, the lock indicator is off and the panel is unlocked.



### Adjust the temperature in the fridge

1. When the control panel is unlocked, press the “Fridge selector”; the buzzer sounds and Fridge temperature indicator flashes. Now the fridge temperature can be set.
2. At every press of the fridge selector, the buzzer sounds, and the setting downshifts by 1. The shift sequence is in a continuous loop as “4°C/ 3°C /2°C /1°/ 9°C / 8°C / 7°C /6°C/5°C /4°C”



## Adjust the temperature for freezer

1. When the control panel is unlocked, press the "Freezer selector"; the buzzer sounds and Freezer temperature indicator flashes. Now the freezer temperature can be set.
2. At every press of the freezer selector, the buzzer sounds, and the temperature downshifts by 1. The shift sequence is in a continuous loop as "-18°C/-19°C/-20°C/-21°C/-22°C/-23°C/-24°C/-14°C/-15°C/-16°C/-17°C/-18°C.



**Notice:** when the temperature is set, if no button is pressed within 5 seconds, the temperature will be automatically confirmed and saved

## Auto Control mode

1. To turn on the Auto Control mode, with the control panel unlocked, press the "Auto Control mode selector"; the buzzer sounds and Auto Control mode indicator is on.
2. To turn on the Auto Control mode, with Auto Control mode indicator on, press the "Auto Control mode selector"; the buzzer sounds and the Auto Control mode indicator is off.



**Notice:** when the Auto Control mode is one, the fridge and freezer temperatures cannot be selected. When the fridge and freezer selectors are pressed, the Auto Control mode indicator flashes with a sound, reminding that the operation is not allowed. If fast cool, fast freeze or holiday function is selected, Auto Control mode automatically stops.

## Holiday mode

The Holiday mode is designed for a situation in which the refrigerator will not be used for long time. When the holiday mode is on, the freezer temperature can be chosen, while the fridge temperature is automatically set as 17°C, which avoids any odor due to high temperature in fridge compartment, and also saves energy consumption.

1. To turn on the Holiday mode, with the control panel unlocked, press the "Holiday mode selector"; the buzzer sounds and Holiday Function indicator is on.
2. To turn off the Holiday mode, with Holiday mode indicator is on, press the "Holiday Function selector"; the buzzer sounds and the Holiday mode indicator is off.



**Notice:** before selecting the holiday mode, please empty the fridge compartment to avoid any food deterioration. If intelligence mode or fast cool is selected, the holiday mode indicator is off and the function automatically stops.

### Super Cool mode

1. To turn on the Super Cool, with the control panel unlocked, press the "Fridge selector" for 3s, the buzzer sounds and the Super Cool indicator is on.
2. To turn off the Super Cool, with Super Cool indicator on, press the fridge selector for 3s, the buzzer sounds and the Super Cool indicator is off.
3. The Super Cool mode automatically end when the refrigerator reaches the set condition. To turn off the Super Cool mode manually, press the fridge selector for 3s.



**Notice:** If Auto Control mode or holiday mode is selected, the Super Cool mode automatically stops. The super-cool function will be automatically disabled when the function has lasted for more than 6 hours

### Fast Freeze Mode

1. To turn on the Fast Freeze mode, with the control panel unlocked, press the Fast Freeze selector, the buzzer sounds and the Fast Freeze indicator is on.
2. To turn off the Fast Freeze mode, with Fast Freeze indicator on, press the Fast Freeze selector; the buzzer sounds and the Fast Freeze indicator is off.
3. When the Fast Freeze automatically ends when the refrigerator reaches the set condition. To turn off the Fast Freeze mode manually, press the Fast Freeze selector for 3s.



**Notice:** The super-freeze function will automatically switch off after 50 hours. The appliance is then operated at the previously set temperature.

### Tips on storing fresh food

Position different food in different compartments according to be below table

Refrigerator compartment	Type of food
Door or balconies of fridge compartment	<ul style="list-style-type: none"> <li>• Foods with natural preservatives, such as jams, juices, drinks, condiments.</li> <li>• Do not store perishable foods</li> </ul>
Crisper drawers (salad drawer)	<ul style="list-style-type: none"> <li>• Fruits, herbs and vegetables should be placed separately in the crisper bin</li> <li>• Do not store bananas, onions, potatoes, garlic in the refrigerator</li> </ul>
Fridge shelf – middle	<ul style="list-style-type: none"> <li>• Dairy products, eggs</li> </ul>

Fridge shelf – top	<ul style="list-style-type: none"> <li>• Foods that do not need cooking, such as ready-to-eat foods, deli meats, leftovers.</li> </ul>
Freezer drawer(s)/tray	<ul style="list-style-type: none"> <li>• Foods for long-term storage</li> <li>• Bottom for raw meat, poultry, fish</li> <li>• Middle for frozen vegetables, chips.</li> <li>• Top for ice cream, frozen fruit, frozen baked goods.</li> </ul>

- It's suggested to set the temperature at 4°C in the fridge compartment, and, whether possible, at -18°C in the freezer compartment.
- For most food categories, the longest storage time in the fridge compartment is achieved with colder temperatures. Since some particular products (as fresh fruits and vegetables) may be damaged with colder temperatures, it is suggested to keep them in the crisper drawers, whenever present. If not present, maintain an average setting of the thermostat.
- For frozen food, refer to the storage time written on the food packaging. This storage time is achieved whenever the setting respects the reference temperatures of the compartment (one-star -6°C, two stars -12°C, three stars -18°

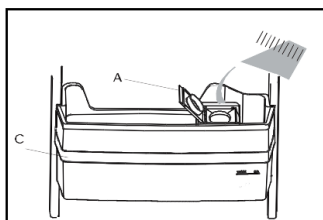
**Notice:** Acid, alkali and salt etc. could erode the internal surface of the freezer. Do not place the food having these substances (e.g. sea fish) directly on the internal surface. Salt water in the freezer should be cleaned up immediately.

**Notice:** Keep a distance of more than 10 mm between food and sensor as to ensure the cooling effect.

### Water dispenser (only for HHSWD918F1XK)

With the water dispenser, cool drinking water can be taped. The water tank should be cleaned before first use (see CARE AND CLEANING section)

#### Filling the water tank





1. Ensure that the water tank is properly inserted (see CARE AND CLEANING section)
2. Open the cap (A) and pour fresh drinking water into the water tank
3. Fill water only up to the mark (2.5L), as otherwise it could overflow when the door opens and closes
4. Close the cap (A) completely

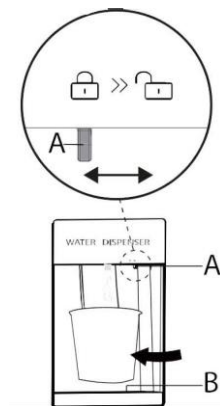
**Notice:** Before refilling, dispose residual water and clean the water tank.

When you don't need water for a long time, empty the water tank and insert the cleaned tank

The cover (C) on the water tank is additionally used to save energy. If you don't use the water dispenser for a long period, install the cover for better insulation and energy saving

### Getting water from the dispenser

1. Ensure the lock (A) is moved to  "Unlock"
2. Place a glass underneath the water outlet
3. Push it gently against the water dispenser to prevent the water from splashing out. Make sure the glass is in line with the dispenser to prevent the water from splashing out
4. Water in the tray (B) should be removed in time, as it could overflow when the door opens and closes
5. Slide the lock (A) to position  "Lock"



### Open door alarm

When the door is not closed for a long time, the refrigerator will emit a drip alarm to remind you to close the door.

### Energy-saving of control panel

If no operation on the control panel is made for 30 seconds, the panel will be automatically off and enter into the locked state, to save power. When the lock function button is pressed or any door is opened, the control panel will be illuminated.

### Power failure

In case of power failure, the food will remain cold for about 5 hours. Follow these tips:

- Open the door/drawer as few as possible
- Do not put additional food inside the appliance
- Inspected the food after power interruption, as the storage period and edible quality of the food will be reduced. Any food that defrosts should be eaten or cooked and then frozen again, in order to prevent health risks.

When the power is connected again, the refrigerator continues to work according to the previous settings.

**Attention:** The lock function is not memorized.

### Non- use for long periods

If the appliance is not used for an extended period, and the Holiday function for the fridge will not be used, please follow the following indications:

- Take out all the food
- Empty and clean the water tank
- Unplug the power cord
- Clean the appliance as described in the cleaning section
- Keep the doors open to prevent the creation of bad odours inside the appliance

**Notice:** turn the appliance off only if strictly necessary

## CARE AND CLEANING

### Defrosting

**Warning!** This is an air-cooled and frost-free refrigerator with automatic defrost and water produced by defrost is stored in evaporating pan and eventually evaporates, so there is no need for manual defrost.

**Warning!** Except for means recommended by the manufacturer, no mechanical equipment or other means shall be adopted to accelerate the defrost process.

### Cleaning

Food left in the refrigerator can produce bad odors, so the refrigerator must be cleaned regularly.

For safety, please unplug the power cord before cleaning.

Use a soft towel or a sponge dampened in warm water (can be added with a neutral detergent) to clean the refrigerator.

**Warning!** Do not use stiff brush, steel brush, abrasives (e.g.: toothpaste, cleanser, etc.), organic solvent (e.g.: gasoline, banana oil, acetone, ethanol, etc.), hot water, acid or alkaline to clean your refrigerator.

Wipe the surface of the refrigerator with a dry towel.

**Warning!** Do not directly sprinkle water onto the refrigerator, since it will easily cause rust, electric leakage and faults.


When the inner is stained with cooking oil or seasoning, please wipe it off in time.

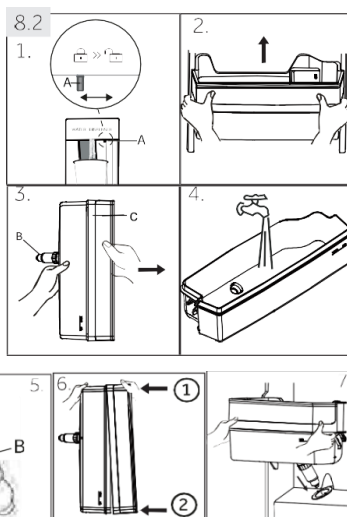
Always keep clear of the dust on the back and left and right sides of the refrigerator to improve heat dissipation.

Door seal strips are easily soiled, please be careful to keep them clean.

**Warning!** It is not allowed to damage the refrigeration tubes during maintenance and cleaning.

### Cleaning the water tank (only for HHSWD918F1XK)

1. Slide the lock (A) to position  "Lock"
2. Take the water tank out of the appliance
3. Remove the cover (C) and unscrew the dispenser spout (B) gently
4. Clean the water tank and the dispenser spout with warm running water and liquid dishwashing detergent. Make sure all soap is rinsed off.
5. Mount the dispenser spout (B) and take care that it is firmly screwed to the water tank, while the O-ring (C) is in position
6. Press the cover to fix it with one side of the water tank, and then do the same for the other side. Check the water tank and cover is assembled completely.
7. Replace the tank inside the appliance. Make sure the dispenser spout is correctly inserted into the hole of the door.



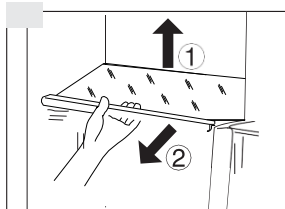


## ACCESSORIES

### Adjustable shelves

The height of the shelves can be adjusted to fit the storage needs.

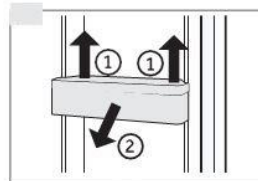
1. Remove the shelf by uplifting its hind edge (1) and pulling it out (2)
2. To reinstall the shelf, put it on the lugs on both sides and push it to the most rearward position until its rear is fixed inside the slots in the sides



### Removable door racks/bottle holder

The door racks/bottle holder can be removed for cleaning:

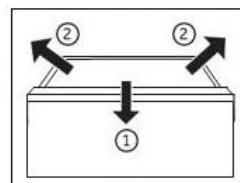
1. Place hands on each side of the rack/holder and lift it upwards (1)
2. Pull the door rack/bottle holder out (2)
3. In order to insert the door rack/bottle holder, the above steps have to be carried out in reverse order



### Removable drawer

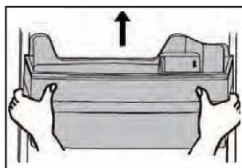
To take the drawer out of the fridge or freezer compartment, pull it out to the maximum extent (1), lift and remove (2)

In order to insert the drawer, the above steps have to be carried out in reverse order.



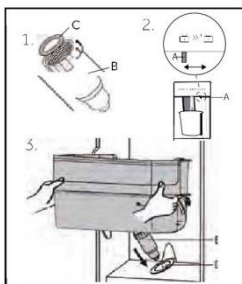
### Water dispenser (only for HHSWD918F1XK)


The water tank can be removed and reinstalled for cleaning in the same way as the door racks



#### Insert the water tank

1. Make sure the dispenser spout (B) is firmly screwed to the water tank and the white O-ring (C) is in position



2. Slide the lock (A) to position  "Lock"

3. Place the water tank in a position so that the dispenser spout (B) fits into the opening of the door (D)

**Notice:** if the water tank is not properly inserted, water can drip from the connection.

Do not use excessive force when removing or installing the water tank, to avoid damaging the tank.

## Replacing the LED-lamps

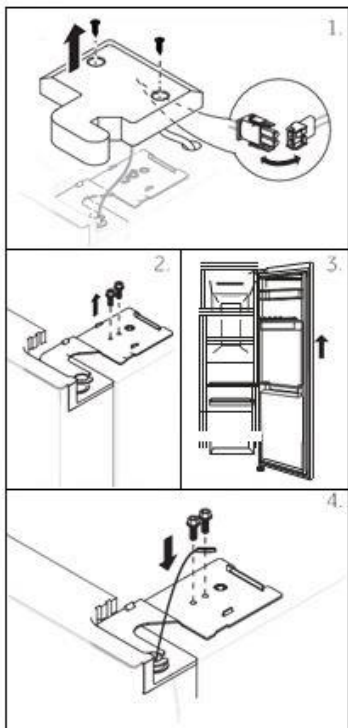
Do not replace the LED lamp yourself, it must only be replaced by either the manufacturer or the authorized service agent

Parameters of the lamps: 12V max 3 W

## Remove and install the doors

If you need to remove or install the appliance doors, please follow the instructions below.

- Before performing any operations, unplug the appliance
- The appliance is heavy, always handle with at least two people
- Do not tilt the appliance more than 45°, do not place it horizontally on the ground



1. Unscrew the hinge cover and remove the cover. Release the cable connector.

2. Unscrews the screw holding the upper hinge in position and then remove the hinge

3. Lift the fridge compartment door to remove it

4. Refit the door by carrying out the above steps in reverse order. Ensure that the grounding cable is fixed by the screw.

**Notice:** the pictures show the removal of the fridge compartment door. For the freezer door, please use the corresponding parts on the other side of the appliance

## Availability of spare parts

- Thermostats, temperature sensors, printed circuit boards and light sources are available for a minimum period of seven years after placing the last unit of the model on the market.
- Door handles, door hinges, trays and baskets for a minimum period of seven years and door gaskets for a minimum period of 10 year, after placing the last unit of the model on the market.

## TROUBLESHOOTING

In case of a problem please check all shown possibilities and follow below instructions before contacting an after sales service.

<b>Problem</b>	<b>Possible cause</b>	<b>Possible solution</b>
The appliance does not work	The appliance is turned off	Press the ON/OFF key to turn on the appliance
	Mains plug is not connected in the mains socket.	Connect the mains plug
	Fuse has blown or is defective	Check the fuse and replace it if necessary
	Socket is defective	Mains malfunctions should be corrected by an electrician
The appliance runs frequently or runs for a too long period of time	The indoor or outdoor temperature is too high	It is normal for the appliance to run longer
	The appliance has been off power for a period of time	Normally, it takes 8 to 12 hours for the appliance to cool down completely
	A door/drawer of the appliance is not tightly closed	Close the door/drawer and ensure the appliance is located on a level ground and there is no food or container jarring the door
The inside of the refrigerator is dirty and/or smells	The inside of the refrigerator needs cleaning.	Clean the inside of the refrigerator
	Food of strong odour is stored in the refrigerator	Wrap the food thoroughly
Moisture formation on the inside of the refrigerator	The climate is too warm and too damp	Increase the temperature
	A door/drawer of the appliance is not tightly closed.	Close the door/drawer
	Food containers or liquids are left open.	Let hot foods cool to room temperature and cover foods and liquids
Moisture accumulates on the refrigerators outside the surface	The climate is too warm and too damp	This is normal in damp climate and will change when the humidity decreases

or between the doors/door and drawer	The door/drawer is not closed tightly.	Ensure that the door/drawer is tightly shut
Strong ice and frost in the freezer compartment	The goods were not adequately packaged	Always pack the goods well
	A door/drawer of the appliance is not tightly closed	Close the door/drawer
Unusual noises	The appliance is not at level	Re-adjust the feet
	The appliance is touching the wall or other objects	Slightly move the appliance
An alarm is beeping	The door is open	Close the door
The interior lighting or cooling system does not work	The LED-lamp is out of order	Please call the service for changing the lamp

### Technical assistance

To contact the technical assistance, visit our website: <https://corporate.haier-europe.com/en/>

Under the section "website", choose the brand of your product and your country. You will be redirected to the specific website where you can find the telephone number and form to contact the technical assistance

## SCRAPPING OLD APPLIANCES



This appliance is marked according to the European directive 2012/19/EU on Waste Electrical and Electronic Equipment (WEEE). WEEE contains both polluting substances (which can cause negative consequences for the environment) and basic components (which can be re-used). It is important to have WEEE subjected to specific treatments, in order to remove and dispose properly all pollutants, and recover and recycle all materials.

Individuals can play an important role in ensuring that WEEE does not become an environmental issue; it is essential to follow some basic rules:

WEEE should not be treated as household waste.

WEEE should be handed over to the relevant collection points managed by the municipality or by registered companies. In many countries, for large WEEE, home collection could be present.

In many countries, when you buy a new appliance, the old one may be returned to the retailer who has to collect it free of charge on a one-to-one basis, as long as the equipment is of equivalent type and has the same functions as the supplied equipment.

## Conformity

By placing the **CE** mark on this product, we are confirming compliance to all relevant European safety, health and environmental requirements which are applicable in legislation for this product

## Guarantee

Minimum guarantee is: 2 years for EU Countries, 3 years for Turkey, 1 year for UK, 1 year for Russia, 3 years for Sweden, 2 years for Serbia, 5 years for Norway, 1 year for Morocco, 6 months for Algeria, Tunisia no legal warranty required.

For further information about the product, please consult <https://eprel.ec.europa.eu/> or scan the QR on the energy label supplied with the appliance

**CANDY HOOVER GROUP S.R.L.**  
Via Privata Eden Fumagalli  
20861, Brugherio Milan Italy

